

Nomadic Furniture Series



1996

BRAND

MATSU

玛祖铭立集团成立于 1996 年，一直致力于为客户提供激发灵感的办公家具整体解决方案。

2001年 MATSU 与德国著名家具品牌达成战略合作，开创了中国办公家具品牌与欧洲合作的先河，将国际化的前瞻性设计，与德国家具精益求精的制造工艺，以及德式严谨的工作风格带入刚起步的中国市场。之后，又陆续与欧洲多家细分领域的领军品牌达成战略合作。

在将欧洲优秀设计带入中国市场的同时，MATSU 深感自主品牌原创设计的重要性，逐步加强自身原创实力，建立研发中心，并与诸多知名设计机构合作，独创属于 MATSU 品牌的原创办公家具。

Established in 1996, MATSU is dedicated to providing inspiring office furniture overall solutions for clients.

Replying on this craftsmanship spirit as a key to international stage, MATSU entered into strategic cooperation with famous German furniture brand. While introducing excellent European designs into China, MATSU is fully aware of the importance in original design made by itself. So it gradually improves its design ability. MATSU collaborates with many famous design institutes, for the purpose of creating furniture that is featured by original MATSU style.

创造激发灵感的办公方式

Inspiring Office Lifestyle



POSITION

灯光是空间调性的灵魂元素，除了主灯照明之外，辅助光源是塑造区域氛围的绝佳选择。空间的氛围感与形象质感上的格调品味都需要使用者跟随光影的变化细细品味。混凝土底座与木制支撑杆的基础框架保证结构的稳定和天然质感。帽檐延用牦牛皮作为表面材质，配合暖光灯源，交相映射，熠熠生辉。整体形态简洁，清晰明了，可以给任意空间的每个角落带来专属的个人闲暇时光。精巧的结构形式和传承着文化基因的纹饰诉说着现代办公中的智慧巧思与人文表达。

Lighting is the soul element of spatial tonality. In addition to the main lighting, auxiliary light sources are a great choice for shaping the atmosphere of the area. The atmosphere of space and the style of image texture need users to follow the changes of light and shadow to savor. The foundation frame with the concrete base and the wooden support poles ensures the stability and natural texture of the structure. The brim of the hat is made of yak skin as the surface material, which is matched with the warm light source. The overall shape is simple and clear, which can bring exclusive personal leisure time to every corner of any space. The exquisite structural form and the ornamentation inheriting cultural genes tell the wisdom and ingenuity and humanistic expression in the modern office.



多材质混合拼贴缝合表面
宽大几何形体，大圆角边缘
实木框架，环保耐用
橡胶地脚，保护产品和地面材料
灵活组合，空间上可多种排布方式，匹配不同空间
满足现代社会中可持续发展的需求和越来越灵活便捷的表现形式

Multi-material mixed collage stitching surface
Broad geometric shape with large rounded edges
Solid wood frame, environmentally friendly and durable
Rubber footing, protecting products and floor materials
Flexible combination, space can be arranged in a variety of ways to match different Spaces
To meet the needs of sustainable development in modern society and more and more flexible and convenient forms of expression

DETAILS

结构精巧，以简驭繁

机智而巧妙的组合显现构造物的结构和装饰之美，融合了理性思考和感性体悟于一身。独具一格的审美体验，似余音绕梁，可三日不绝，令人回味无穷。

Delicate structure

The clever and ingenious combination shows the beauty of the structure and decoration of the structure, integrating rational thinking and perceptual understanding. Unique aesthetic experience, like lingering sound around the beam, makes people immersed in them for a long time.



DETAILS



混凝土底座、盘长纹纹样

把传统的盘长纹样镶嵌在富含文化气息的混凝土基材上，以渐变圆柱为外轮廓包裹，柔化边缘，浑然一体，有圆润通透之感。

Concrete base、Panchang pattern

The traditional Panchang pattern is inlaid on the concrete substrate with rich cultural flavor. The overall form is wrapped with gradual cylinder as the outer contour, softening the edges, so that it has a unified, round and transparent feeling.

DETAILS

油蜡皮

油蜡皮是牛皮制皮工艺的一种，需要在水厂工艺中就和普通牛皮的制作工艺分开了。主要区别是鞣制阶段，普通牛皮主要采用铬鞣，植鞣，醛鞣等。油蜡皮采用的是油鞣，皮革鞣制染色后，皮革柔软，弹性好，透气性好，张力大。同时，工艺中的真空干燥过程，使油蜡皮还具有不易霉变的特性。

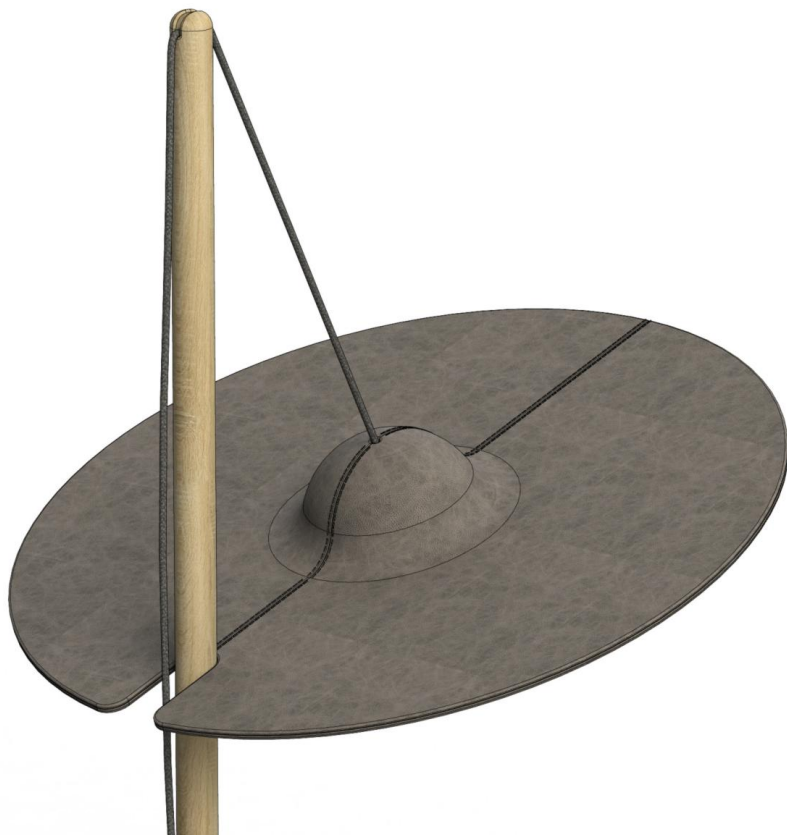
它的吸水和吸油性较强，粘到水和油后的部分，皮面颜色会变深。其实正是油蜡皮的这些特点，让它给人一种怀旧和沧桑的感觉。当皮革被拉伸的时候会产生颜色的深浅变化，此类产品用手刮擦时比较容易出现刮痕，这也是油蜡皮最特殊的一点。

Oil wax skin

Oil wax leather is a kind of cowhide leather making process, which needs to be separated from the ordinary cowhide production process in the water plant process. The main difference is the tanning stage, ordinary cowhide mainly uses chrome tanning, vegetable tanning, aldehyde tanning, etc. Oil wax skin is used oil tanning, after leather tanning and dyeing, the leather is soft, good elasticity, good air permeability, large tension. At the same time, the vacuum drying process in the process makes the oil wax skin also have the characteristics of not easy to mildew.

It has strong water and oil absorption, and the color of the skin surface will become darker when it sticks to the part after water and oil. In fact, it is these characteristics of oil wax skin that make it give people a feeling of nostalgia and vicissitudes. When the leather is stretched, there will be a change in color, and such products are more prone to scratches when scratched by hand, which is also the most special point of oil wax skin.

DETAILS



牦牛皮灯帽

主体为拟人化灯帽形式，表面选用牦牛皮材质，生动的曲线形式和丰富的肌理表情在光影变化中更显风情。

Yak skin lamp cap

The main body is in the form of anthropomorphic lamp cap, and the surface is made of yak skin material. The vivid curve form and rich texture expression show more amorous feelings in the light and shadow changes.

DETAILS

皮质台面,水泥logo圆心

触手可及的温润手感，复古沧桑的外观搭配中心细腻平滑的混凝土圆盘，两种触感和外观交织，相互纠缠和映衬。厚重清雅的独特气质安安静静地竖立在空间一隅。

Leather table top, cement logo center

The leather has a palpable warm feel, and the retro appearance of the vicissitudes is paired with the delicate smooth concrete disc in the center. The two touches and looks intertwine, intertwine and complement each other. The thick and elegant unique temperament stands quietly in a corner of the space.



DETAILS

多层叠加，厚薄有秩

台面为多层叠加，由薄转厚，层层堆叠，配合水泥底座冲淡产品单薄的体量。纤薄的台面，坚实的底座，配合空间塑造专属氛围。

Multilayer superposition

The table is multi-layer superposition, from thin to thick, layer by layer stacking, with the cement base to dilute the thin volume of the product. Thin table, solid base, with space to create exclusive atmosphere.



DETAILS

白橡木清漆灯杆

木皮上刷上清漆，保留了木材的质感。使整个木皮看上去光亮，但保留了木材的质感

White oak varnish light pole

The main body is in the form of anthropomorphic lamp cap, and the surface is made of yak skin material. The vivid curve form and rich texture expression show more amorous feelings in the light and shadow changes.



DETAILS

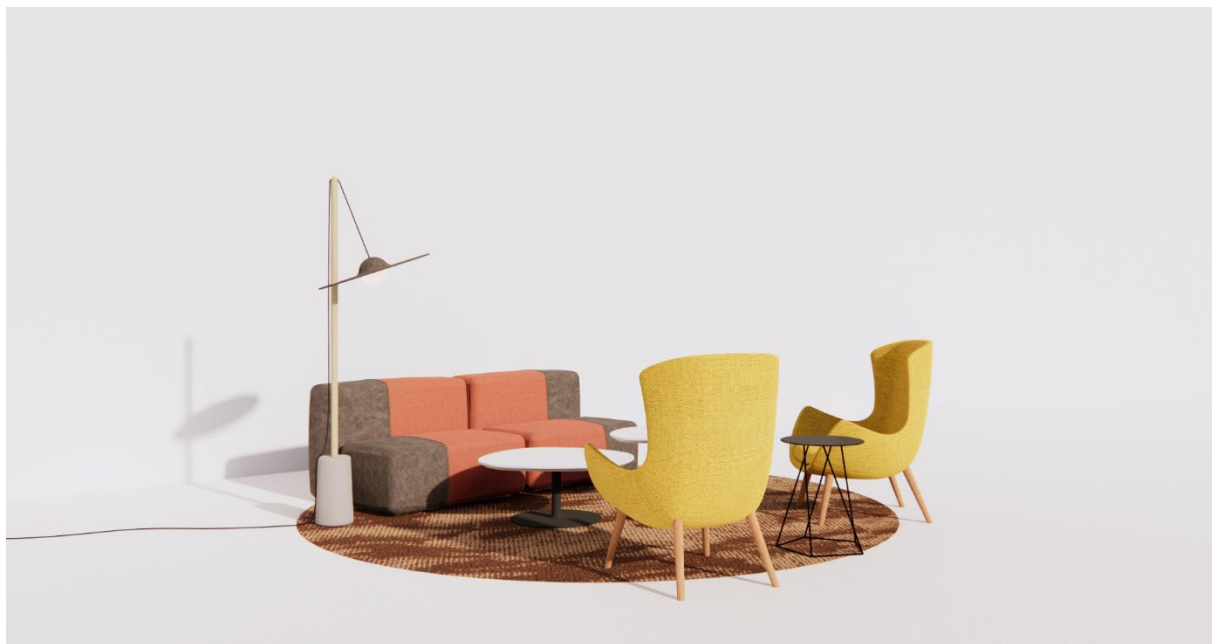
圆球LED暖光灯

采用LED暖色灯光，能耗低，效率高。给人温馨，放松的感觉，让人处于放松的状态，并且其亮度和广度完全可以胜任工作和学习的需求。

Ball LED warm light lamp

LED warm color lighting, low energy consumption, high efficiency. Give people a warm, relaxed feeling, let people in a relaxed state, and its brightness and breadth can be fully competent for the needs of work and study.





接待区

颂今落地灯 + 大叶子休闲椅、茶几 + 三叶草茶几 + 筑屿模块沙发

Reception area

Drumroll lamp + Ginkgo chair + Ginkgo sidetable + Clover teatable + Langchan sofa



会客区

颂今茶几 + 都市牧人沙发 + 海神茶几 + 云茶几 + Volpino 木制四脚椅

Negotiation area

Drumroll sidetable + Skin sofa + Njord sidetable + Clouds teatable + Volpino wood chair

SCENES



过廊
颂今落地灯 + 咖啡豆茶几 + 咖啡豆椅
Corridor
Drumroll lamp + Coffee teatable + Coffee chair



讨论区
颂今落地灯 + 颂今茶几 + Singlax + 都市牧人休闲椅 + X-brick + 筑屿模块沙发
Discussion area
Drumroll lamp + Drumroll sidetable + Singlax + Skin lounge chair + X-brick + Langchan chair



休闲区

颂今落地灯 + 颂今茶几 + 游马凳 + 都市牧人

Leisure area

Drumroll lamp + Drumroll sidetable + Wrangler + Skin series



私人空间

颂今茶几 + 都市牧人休闲椅

Private space

Drumroll sidetable + Skin lounge chair

Materials

凳架 (钢制喷粉)

Stool frame (Steel powder spraying)



砂白
Frosted white



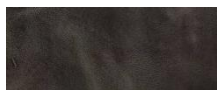
砂黑
Frosted black



砂灰
Frosted grey

皮革 示例

Leather e.g.



灰色油蜡皮
waxed yak hide



灰色
grey



铁灰色
Steel grey



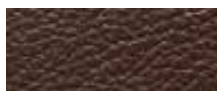
黑色
black



橘色
orange



浅棕色
light brown



棕色
brown



炭灰色
Charcoal gray



深咖
Dark coffee



卡其
khaki



冷灰
Cold grey

橡木实木

Oak solid



清漆本色
Varnish true color

INSPIRING OFFICE LIFESTYLE

MATSU SHANGHAI FLAGSHIP SHOWROOM

上海市徐汇区益贾洪路686号

No. 686 Zhaojiabang Road, Xuhui District, Shanghai, P.R. China, P.C.: 200030

T +86 21 5456 0662

MATSU BEIJING SHOWROOM

北京市朝阳区光华路9号光华路SOHO2期B座1202/3室

Room 1202/3, Tower B, Guanghai SOHO II, No.9Guanghai Road, Chaayang D Beijing. P.R.China, P.C.: 100020

T +86 10 5900 721 0

MATSU GROUP HEAD OFFICE

上海市闵行经济技术开发区南沙路8号

No. 8 Nansha Road, Minhang Economic ft Tchnological o ,lopment Zon Shanghai, P.R. China, P.C.: 200245

MATSU GUANGZHOU FACTORY

广东省中山市南朗镇第一工业区工业大道龙基路1号

No.1 Lon'li Road, Industrial Avenue, No. 1 Industrail District; Nanlang Town, Zhongshan, Guangdong, P.R. China, P.C.:

528451

T +86 760 8558 8180

E info@matsu.cn